

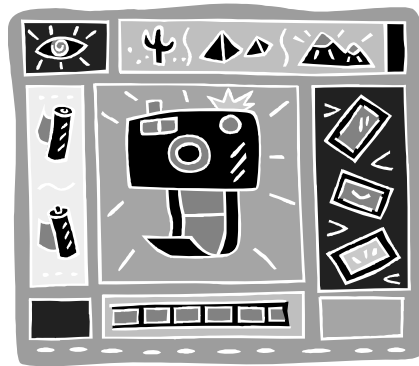
Northern Agricultural Association Inc

2011 Singleton Show 2011

Proudly Sponsored by



23, 24 & 25 September



Section Q ~ Photography

ENTRIES CLOSE Tuesday 13 September 2011

**Judge Mr Roy Killen
Belmont Photography Club**

STEWARDS John & Fay Gray, Richard Fox
For enquiries or help with entries please phone **6572 1961**

Rules & Regulations

- Please note entry system where entry forms, fees, and suitably mounted photographs are all brought to the Stewards in the Pavilion on the same day—Tuesday 13 September between **10am and 4pm only**.
- Entries **must conform** with all Rules & Regulations
- Name and Class No: on **middle back** of photo. **SO STEWARDS CAN PLACE VELCRO TABS ON CORNERS!!**
- Photos must be no larger than 6" x 8" (15x20cm) and mounted ON or BEHIND lightweight to medium weight cardboard with maximum borders on top and both sides, of no more than 1" (2.5cm) with a wider border of 1½" (4cm) underneath to allow room for title of photo. All photos must be titled for identification purposes.
- Photos must be taken by the Exhibitor, and to be their own original work.
- **PHOTOS MUST NOT HAVE WON A PRIZE IN THIS SECTION AT ANY PREVIOUS SINGLETON SHOW**
- Exhibitors are limited to THREE photographs in each class.
- No photo may be entered in more than one class
- Every reasonable care will be taken of exhibits, but the Committee will not be responsible for any losses or damages.
- Entries and prize money must be picked up from Stewards in Pavilion between **10am and 2pm only** Sunday 25 September or thereafter from the secretary's office and *before* 2pm Tuesday 27 September 2011. Show Office is **CLOSED** Monday.

ENTRY FEE \$1.00 per entry

PRIZES 1st (Classes 1-12) a voucher for a free 8"x12" photo enlargement (\$9.95 value) donated by ***Fuji Image Plus***

PRIZE MONEY 2nd \$6 & 3rd \$4 donated by ***Singleton Ink Spot, Adamthwaite Crash Repairs, Singleton Exhaust Centre, Scott, Crisp & Hamblin Surveyors, Tony Mexon & Associates Surveyors and Worn-Out Wares***

Photos may be in Colour or Black & White

Novice Classes (*A Novice must not have worked professionally as a photographer or won a champion or reserve champion prize at any previous photography competition*)

Class QN1 Novice Open – Any subject.

Class QN2 Photo of people one or more

Class QN3 The World of Nature, wild or domesticated

Open Classes (*Open to all photographers*)

Class Q4 Open, Any subject.

Class Q5 Nature Only. Depicting natural landforms, living uncultivated plants and living, untamed wildlife in a natural habitat. The content of the original scene must not be altered by manipulation. 1st \$10, 2nd \$8, 3rd \$6 donated by **John Gray, Piano Tuner**

Class Q6 Any Aspect of Life in the Hunter Valley.

Class Q7 Creative Photo, any subject, may be abstract, manipulated or experimentally developed.

Class Q8 Buildings, Vehicles, Machinery, Tools or Household items

Class Q9 Reflections, shadows, sunshine.

Class Q10 Portrait, people one or more

Class Q11 Photo of any Group of 3 or more

Class Q12 Sequence or group of photos (2,3,4,5 or 6) on a single mount – **NO MORE** than 2.5 cm (1") between photos, photos may touch. **Maximum** size of mount 38 x 38cm (15" x 15") or 30 x 45 cm (12" x 18"), all photos to face same way.

CHAMPION PHOTOGRAPHIC EXHIBIT Sash & \$30 voucher donated by **Singleton Ink Spot**

RES CHAMPION PHOTOGRAPHIC EXHIBIT Sash & \$20 voucher donated by **Singleton Ink Spot**

"The Claudie Noël Memorial Award" for Best Photo in Show. \$25 donated by **Visual Arts Students, Singleton TAFE**

PTO

Junior Classes

Open to children 18 years and under

ENTRY IS FREE

PRIZE MONEY (Classes 13-18) 1st \$6, 2nd \$4, 3rd \$2

ENTER ONLY ON JUNIOR FORM PROVIDED

Photos may be either colour or black & white

Class QJ13 Open, any subject

Class QJ14 Photo of People, one or more –

Class QJ15 Creative Photo, any subject, may be abstract, manipulated or experimentally developed.

Class QJ16 Buildings, Vehicles, Machinery, Tools or Household items.

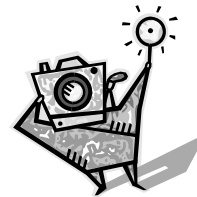
Class QJ17 Plants, Flowers, Fruit, Vegetables, Nuts, Shells

Class QJ18 Birds, Animals, Fish, Reptiles or Insects

CHAMPION JUNIOR PHOTOGRAPHIC EXHIBIT

Sash & \$15 voucher donated by

Singleton Ink Spot



Gate Entry

| | |
|------------------------|---------|
| Adult | \$15.00 |
| Aged Pensioner | \$5.00 |
| Child 12 to 18 years | \$10.00 |
| Child 5 to 12 years | \$5.00 |
| Children under 5 years | FREE |

The Secretary

Northern Agricultural Association Inc

PO Box 124

Singleton 2330

Phone 02 6572 2039

Fax 02 6572 2393

NORTHERN AGRICULTURAL ASSOCIATION INC.

SINGLETON SHOW 2011

SECTION "Q"- ENTRY FORM

PHOTOGRAPHY

| Class No. | Office Use Only | Title of Photo | Fee | Class No. | Office Use Only | Title of Photo | Fee |
|------------------|-----------------|----------------|-----|------------------|-----------------|----------------|-----|
| QN1 | | | | Q7 | | | |
| QN1 | | | | Q7 | | | |
| QN1 | | | | Q7 | | | |
| QN2 | | | | Q8 | | | |
| QN2 | | | | Q8 | | | |
| QN2 | | | | Q8 | | | |
| QN3 | | | | Q9 | | | |
| QN3 | | | | Q9 | | | |
| QN3 | | | | Q9 | | | |
| Q4 | | | | Q10 | | | |
| Q4 | | | | Q10 | | | |
| Q4 | | | | Q10 | | | |
| Q5 | | | | Q11 | | | |
| Q5 | | | | Q11 | | | |
| Q5 | | | | Q11 | | | |
| Q6 | | | | Q12 | | | |
| Q6 | | | | Q12 | | | |
| Q6 | | | | Q12 | | | |
| SUB-TOTAL | | | | SUB-TOTAL | | | |
| TOTAL | | | | TOTAL | | | |

NAME: _____
 ADDRESS: _____

 PHONE: _____

 SIGNED: _____

Please accept the following entries for the forthcoming Annual Singleton Show. I agree that the exhibits shall be subjected to the Rules and Regulations of the NAA Inc, and I will abide by such Rules and Regulations, and by any decision of the Committee with regard to exhibits. I will not hold the Association responsible for loss, damage to, or wrongful delivery of the same.

NORTHERN AGRICULTURAL ASSOCIATION INC.

SINGLETON SHOW 2011

SECTION "Q"- ENTRY FORM

JUNIOR PHOTOGRAPHY

| No. | Office Use Only | Title of Photo | No. | Office Use Only | Title of Photo |
|------|-----------------|----------------|------|-----------------|----------------|
| QJ13 | | | QJ16 | | |
| QJ13 | | | QJ16 | | |
| QJ13 | | | QJ16 | | |
| QJ14 | | | QJ17 | | |
| QJ14 | | | QJ17 | | |
| QJ14 | | | QJ17 | | |
| QJ15 | | | QJ18 | | |
| QJ15 | | | QJ18 | | |
| QJ15 | | | QJ18 | | |

NAME: _____
ADDRESS: _____

PHONE: _____
AGE: _____ SCHOOL CLASS: _____

SCHOOL: _____
All junior photographers must enter on **this** "Junior Photography Entry Form" **ONLY**

Please accept the following entries for the forthcoming Annual Singleton Show. I agree that the exhibits shall be subjected to the Rules and Regulations of the NAA Inc, and I will abide by such Rules and Regulations, and by any decision of the Committee with regard to exhibits. I will not hold the Association responsible for loss, damage to, or wrongful delivery of the same.

SIGNED: _____
Parent/Teacher